



We heat like the cavalry



YEARS **ELTERM**[®]



Hydraulic modules and
electric inline heaters
in CH system.



version 2024.04



Hydraulic modules

CH in - line heaters

Admiral HP

page 6



page 9

Uhlan LED



Boatswain LED PRO
Boatswain LED



page 10

Rifleman PRO
Rifleman
Rifleman module



page 11

Commander HP



page 7

Uhlan HP



page 8

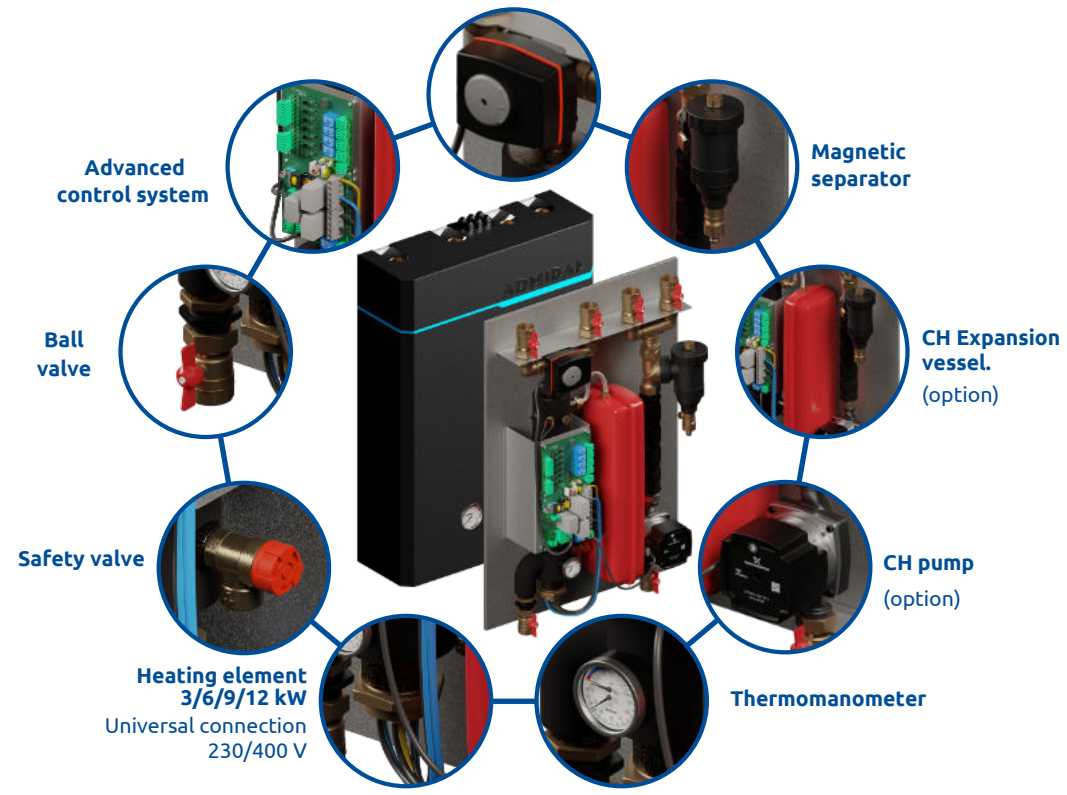


- Dedicated to monoblock heat pumps

- Ideal as peak heat source

New 2024 Admiral HP

Three-way valve with servo



OPTION

stand-alone heater

I variant - temporary lack of heat pump

II variant - temporary operation - awaiting heat pump installation

III variant - house under construction - concerned about external heat source

Green energy
clean air
programme



Admiral HP



Commander HP



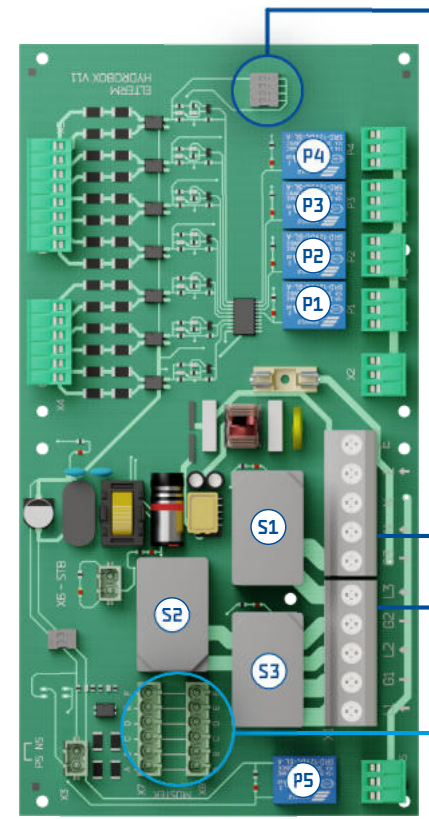
Uhlan HP



Boatswain HP

**New
spring 2024**

The most advanced control system in Poland



Blok I
Control of central heating pumps - Max. 4 circuits

low-current relays

Switch for changing the running of the central heating pumps in continuous mode.

Block II
Control of in - line heater- III steps

high current contactors

Main power supply 230/400 V

Power supply (4 5 6 7 8) diagrams for N PE U W and N PE U W

Whole system thermal switch

Block III
Connecting terminal

1. the three-way valve for CH/DHW
2. the rotary valve servo

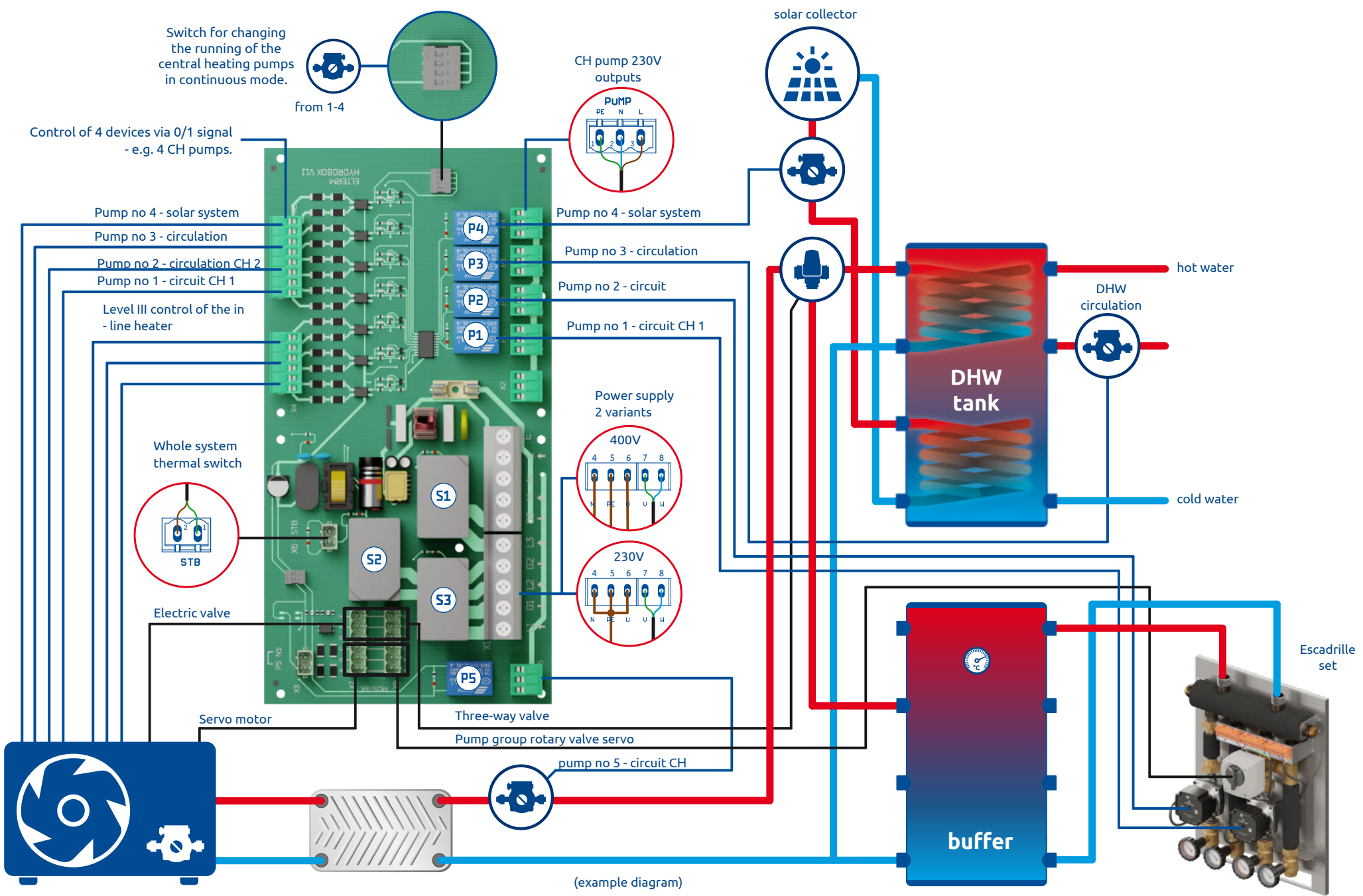
Block IV
Self-heating unit III variants

I variant - temporary absence of heat pump
II variant - temporary running - awaiting heat pump installation
III variant - house under construction - worried about external heat source

Temperature sensor

external 230V thermostat

pump





CH inline heaters - comparison



1. Maximum output of the heater
2. Connection stubs
3. Build in high-current contactors
4. Built-in low-current relay
- 5 Built-in thermic switch of the whole system - STB
- 6) III stage control of heaters (230V)

7. Possibility of connecting an external thermostat
230 V (stand-alone operation)
8. In-line heater operation counter
9. Built-in CH water thermostat (5-70°C)
10. Metal casing
11. Magnetic separator
12. Bilt-in pressure gauge and safety valve

13. Three-way electro-valve + servo
14. Thermomanometer
15. Expansion vessel
(3/4" connection - in - line heater body)
16. CH pump (180mm spacing)
17. Universal connection - 4 connections /
hydraulic low loss header function

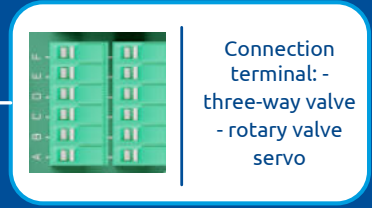
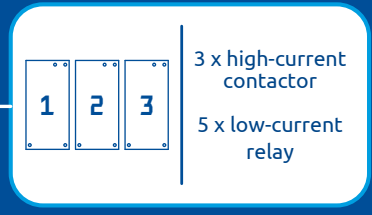
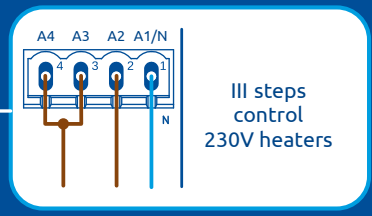
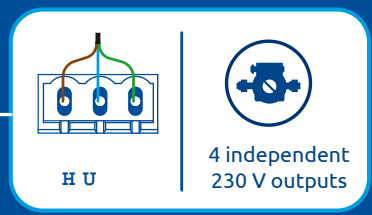
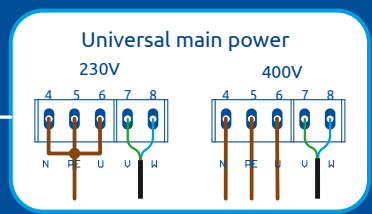
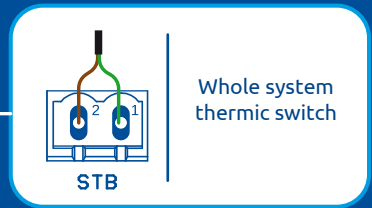
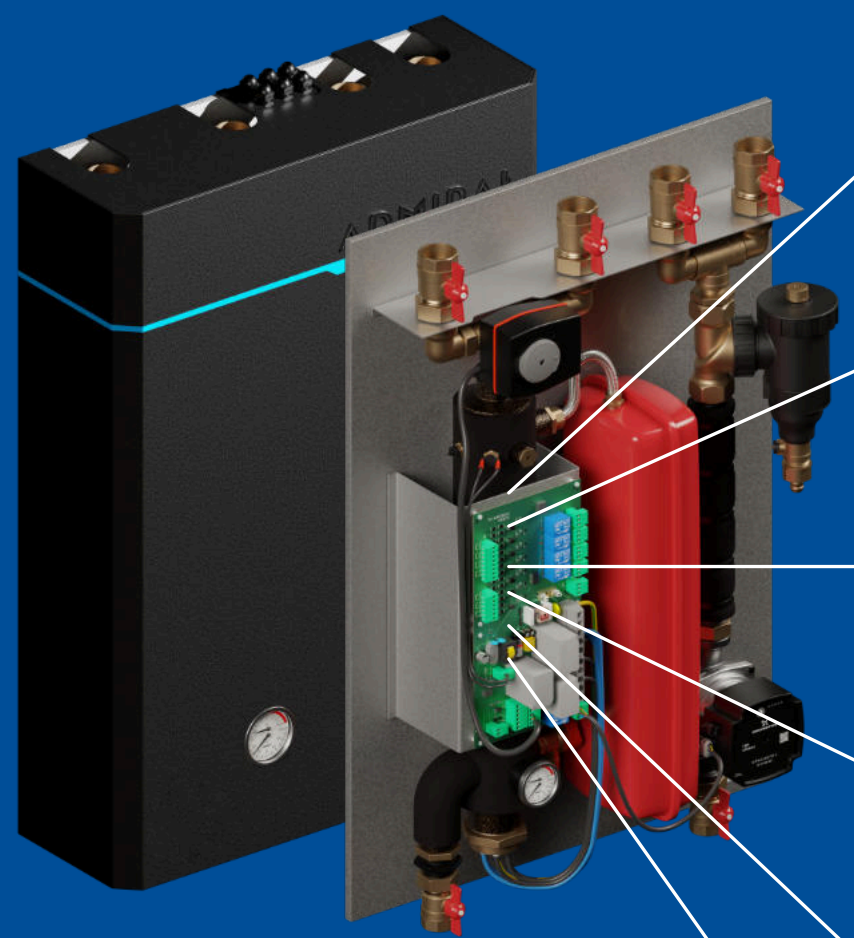


Hydraulic modules and inline heaters for working with heat pumps																	
	1	2	3	4	5	6	7	8	9	10	11	12	13	14	15	16	17
Admiral HP	12	1"	●	●	●	●	●	○	○	●	●	●	●	●	h/o	h/i	○
Commander HP	12	1"	●	●	●	●	●	○	○	●	●	●	h/o	○	h/o	h/i	○
Uhlan HP	12	1½h	●	●	●	●	●	○	○	●	○	●	h/o	○	h/o	○	○
CH inline heaters for use with heat pumps																	
Uhlan LED	12	1½"	●	●	●	●	●	●	●	●	○	○	h/o	○	○	○	○
Boatswain LED PRO	12	1¼"	●	●	●	●	●	●	●	○	○	○	h/o	○	○	○	●
Boatswain LED	12	1½"	●	●	●	●	●	●	●	○	○	○	h/o	○	○	○	○
Boatswain HP	12	1½"	●	●	●	●	●	○	○	○	○	○	○	○	○	○	○
Rifleman PRO	6	1¼"	○	○	○	○	○	○	○	●	○	○	○	○	○	○	●
Rifleman	6	1½"	○	○	○	○	○	○	○	●	○	○	○	○	○	○	○

max power	Admiral HP	Commander HP	Uhlan HP	Uhlan LED	Boatswain LED PRO	Boatswain LED	Boatswain HP	Rifleman PRO	Rifleman
3 kW	373003	351003	330003	264003	254003	234003	244003	222303	212303
6 kW	373006	351006	330006	264006	254006	234006	244006	224006	214006
8 kW	—	—	—	—	254008	234008	244008	—	—
9 kW	373009	351009	330009	264009	—	—	—	—	—
12 kW	373012	351012	330012	264012	254012	234012	244012	—	—

● h / i - possible installation inside the housing

● h / e - possible installation outside the housing

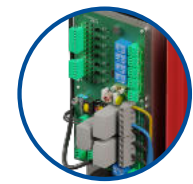


model	max power	code
Admiral HP 3	3 kW	373003
Admiral HP 6	6 kW	373006
Admiral HP 9	9 kW	373009
Admiral HP 12	12 kW	373012

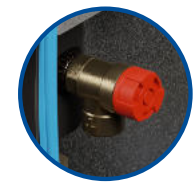
Optional equipment	code
CH expansion vessel 12l + pipe	900012
CH pump Grundfos 25/7	900903
CH pump Leszno LFP 25/6	900803

New Spring 2024

In set:



Advanced control system



Safety valve



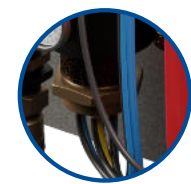
Thermomanometer



Magnetic separator



Three-way valve with servo



Electric heater 3/6/9/12 kW

Option:



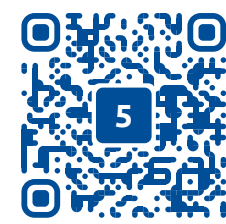
CH expansion vessel



CH pump

Temporary absence of heat pump operation	External 230V thermostat	CH pump	Output no 5 230V
--	--------------------------	---------	------------------

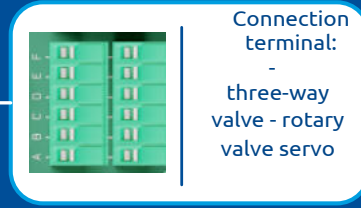
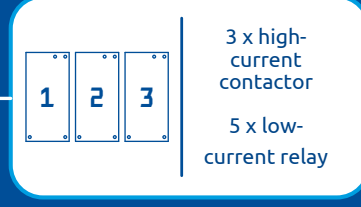
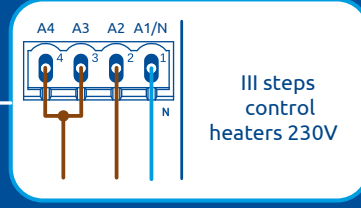
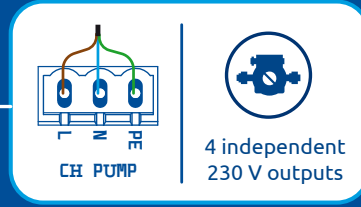
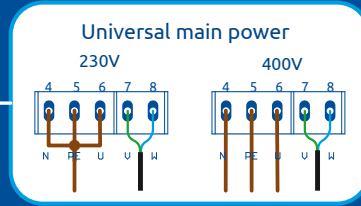
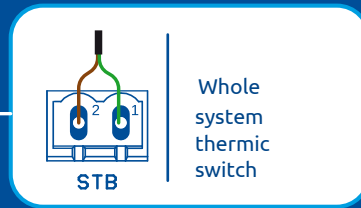
scan or click



selection configurator



data sheet



model	max power	code
Commander HP 3	3 kW	351003
Commander HP 6	6 kW	351006
Commander HP 9	9 kW	351009
Commander HP 12	12 kW	351012

Optional equipment	code
CH expansion vessel 12L + pipe	900012
CH pump Grundfos 25/7	900903
CH pump Leszno LFP 25/6	900803

New Spring 2024

energy efficiency class D

In set:

- Advanced control system
- Safety valve
- Thermomanometer
- Magnetic separator
- Three-way valve with servo
- Electric heater 3/6/9/12 kW

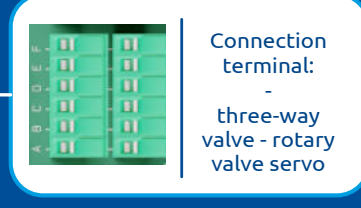
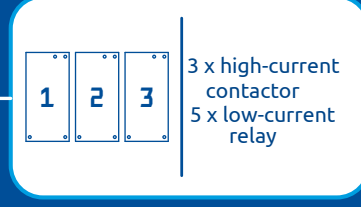
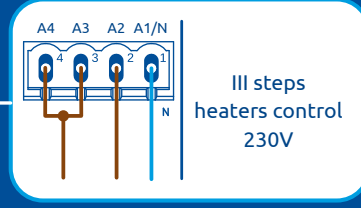
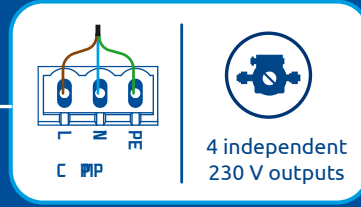
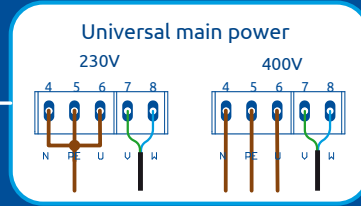
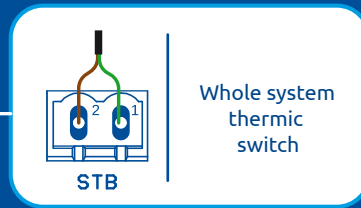
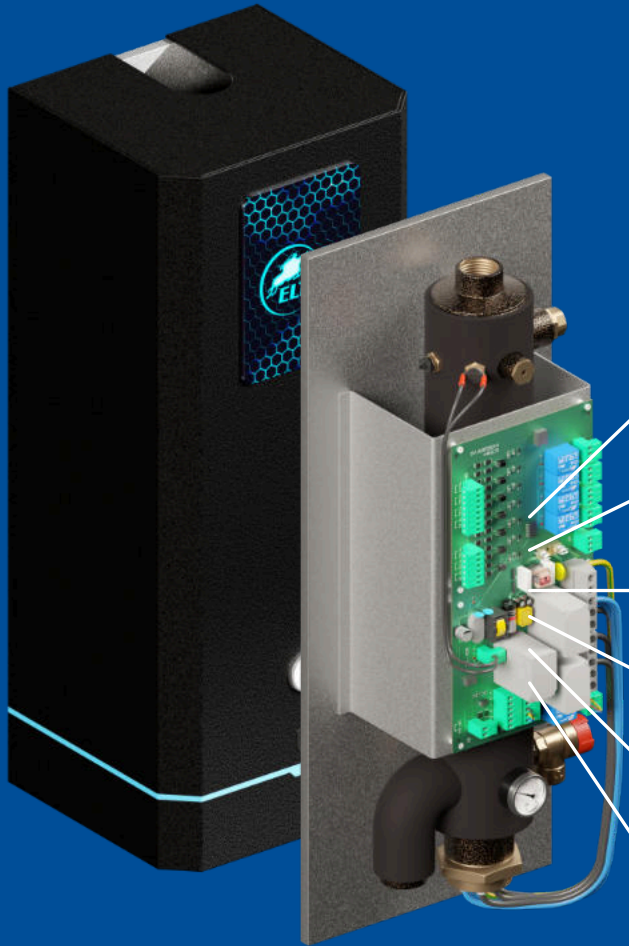
Option:

- CH expansion vessel
- 3/4" Ext for the connection of an external expansion vessel
- CH pump

- Temporary absence of heat pump operation
- External 230V thermostat
- CH pump
- Output no 5 230V

scan or click





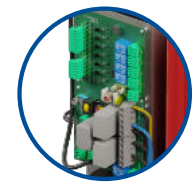
model	moc maksymalna	kod
Uhlan HP 3	3 kW	330003
Uhlan HP 6	6 kW	330006
Uhlan HP 9	9 kW	330009
Uhlan HP 12	12 kW	330012

Optional equipment	code
CH expansion vessel 12l + pipe	900012
CH pump Grundfos 25/7	900903
CH pump Leszno LFP 25/6	900803

New Spring 2024

energy efficiency class D

In set:



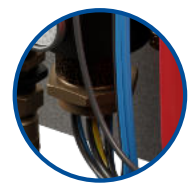
Advanced control system



Safety valve



Thermomanometer

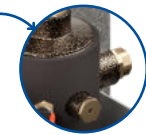


Electric heater 3/6/9/12 kW

Option:



CH expansion vessel



3/4" Ext for the connection of an external expansion vessel



Temporary absence of heat pump operation



External 230V thermostat

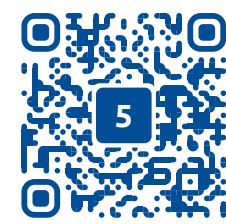


CH pump



Output no 5 230V

scan or click

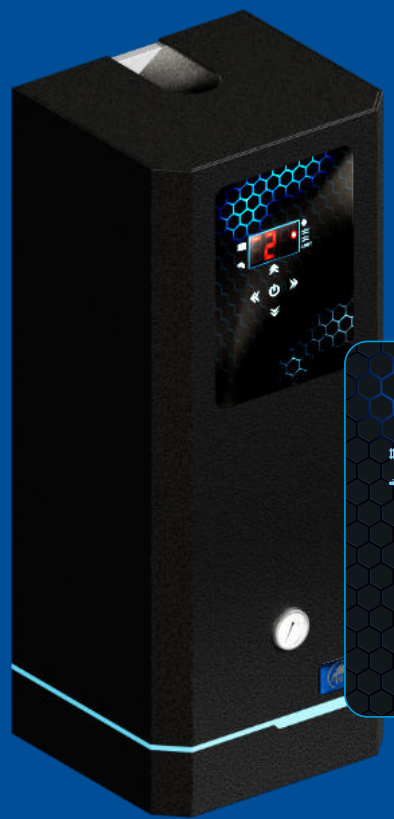


selection configurator



data sheet

Uhlan LED

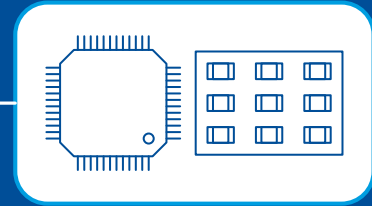


model	max power	code
Uhlan LED	3 kW	264003
Uhlan LED	6 kW	264006
Uhlan LED	9 kW	264009
Uhlan LED	12 kW	264012

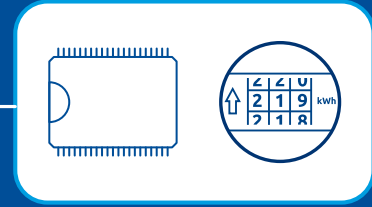
energy efficiency class D



Electronic control panel

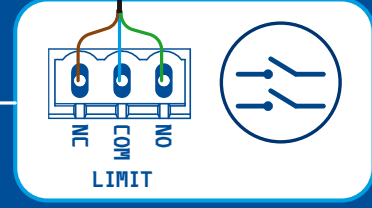


microprocessor control system



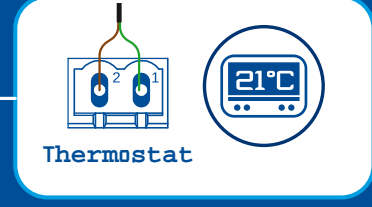
Operation counter Uhlan LED

- Heater operation counter
- stop heating
- adjustable consumption energy
- stop heater operation signal



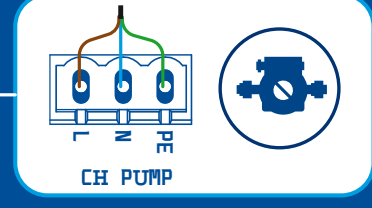
End of limit

Switches the gas boiler off when the electric reheater is switched on. Switches the gas boiler on when the set energy consumption limit is reached.



External voltage-free thermostat (0V)

Programming the operation of the Ulan LED

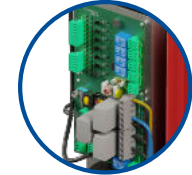


CH pump control.

Possibility to switch on CH pump independently of the operation of the heat source (gas boiler, solid-fuel boiler, Uhlan LED)

The in - line heaters can be operated with any voltage-free (0V) wired or wireless room controller.

Green energy clean air programme



Advanced control system



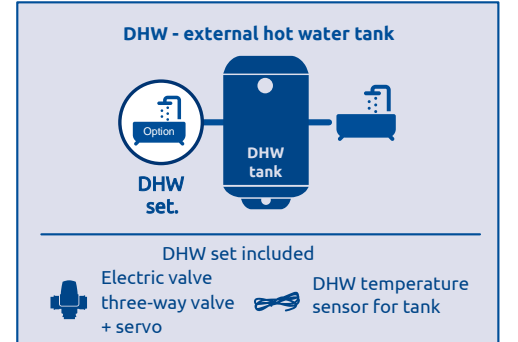
Safety valve



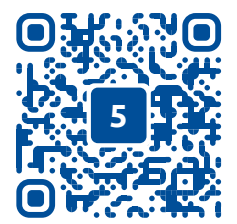
Thermomanometer



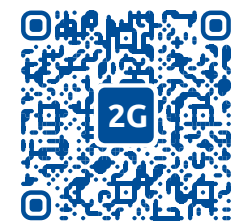
Electric heating element 3/6/9/12 kW



scan or click



selection configurator



data sheet

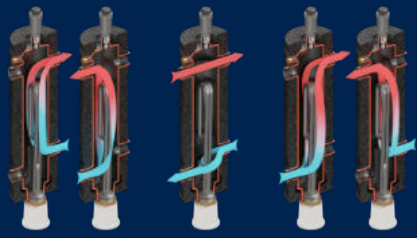


Boatswain LED PRO

Boatswain LED



low loss header function



Universal connection - 5 variants

model	max power	code
Boatswain LED PRO	3 kW	254003
Boatswain LED PRO	6 kW	254006
Boatswain LED PRO	8 kW	254008
Boatswain LED PRO	12 kW	254012



Get as much as you can from PV



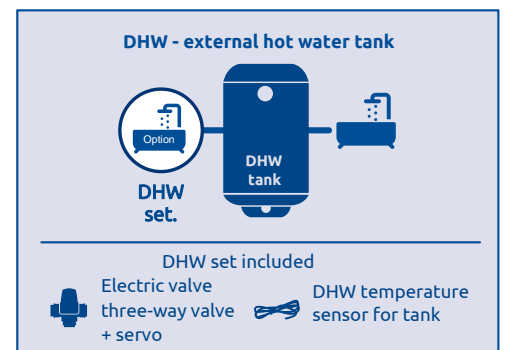
- Electronic control panel**
8.8.8
- Boatswain LED work counter**
- consumption setting energy
- stop signal operation
- End of limit**
Disconnects the gas boiler when the reheater is switched on. Switches the gas boiler on when the set energy consumption limit is reached.
- External voltage-free thermostat (0V)**
Programming of work
- CH pump control.**
Possibility to control an external CH pump independently of the heat source

model	max power	code
Boatswain LED	3 kW	234003
Boatswain LED	6 kW	234006
Boatswain LED	8 kW	234008
Boatswain LED	12 kW	234012

energy efficiency class D

The in - line heaters can be operated with any voltage-free (0V) wired or wireless room controller.

Green energy
clean air programme



scan ora click



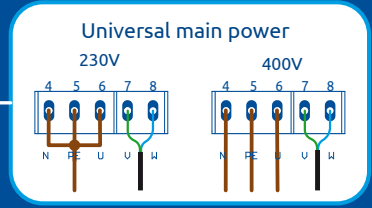
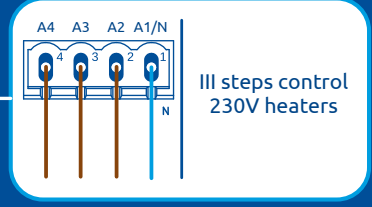
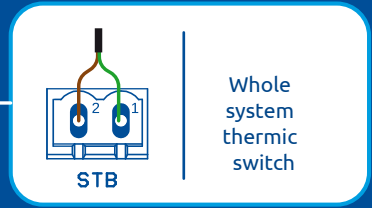
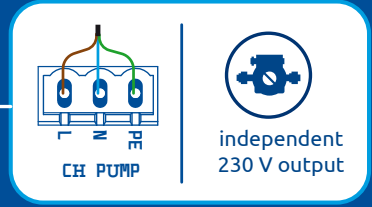
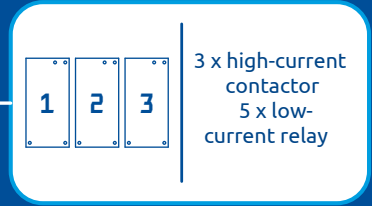
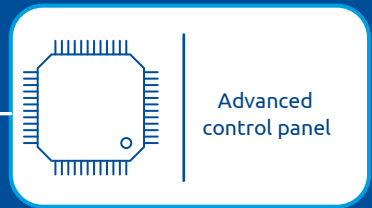
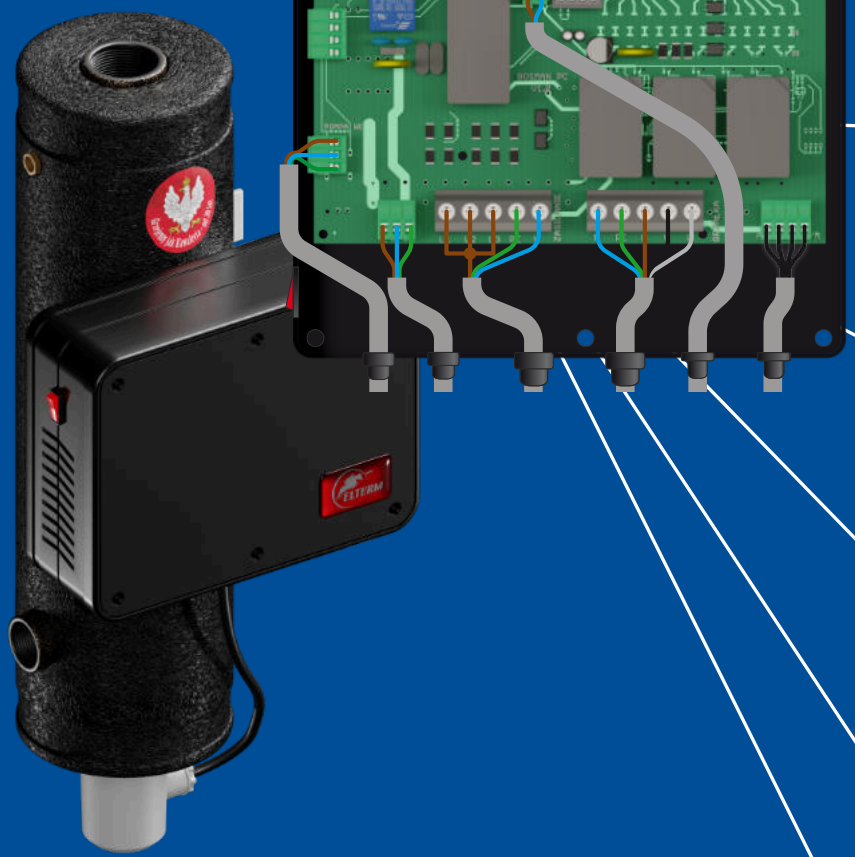
selection configurator



data sheet

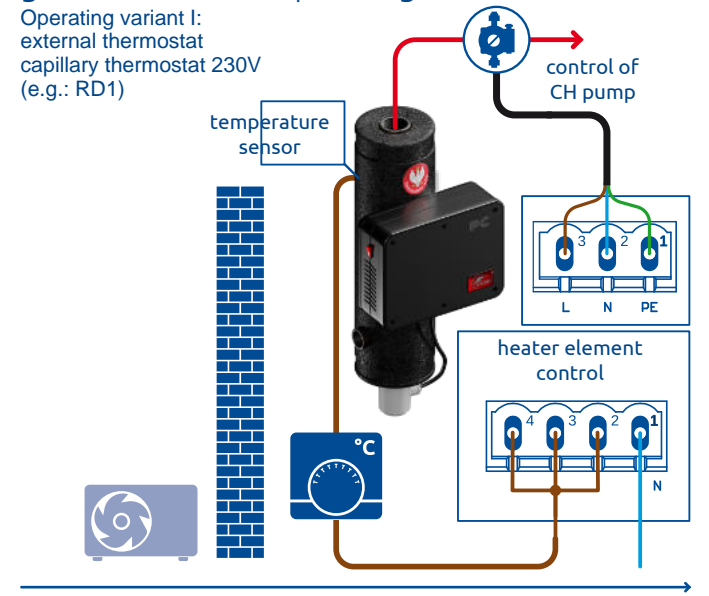


Boatswain HP



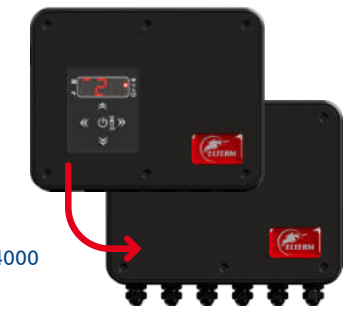
model	max power	code
Boatswain HP	3 kW	234003
Boatswain HP	6 kW	234006
Boatswain HP	8 kW	234008
Boatswain HP	12 kW	234012

Boatswain HP heat pump temporarily out of operation - quick response guaranteed - two operating variants

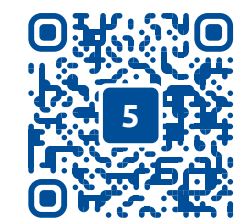


Operating variant II:
mounting of control panel from Boatswain LED - compatible with Boatswain HP automation

LED control panel - code 234000



scan or click



selection configurator



data sheet

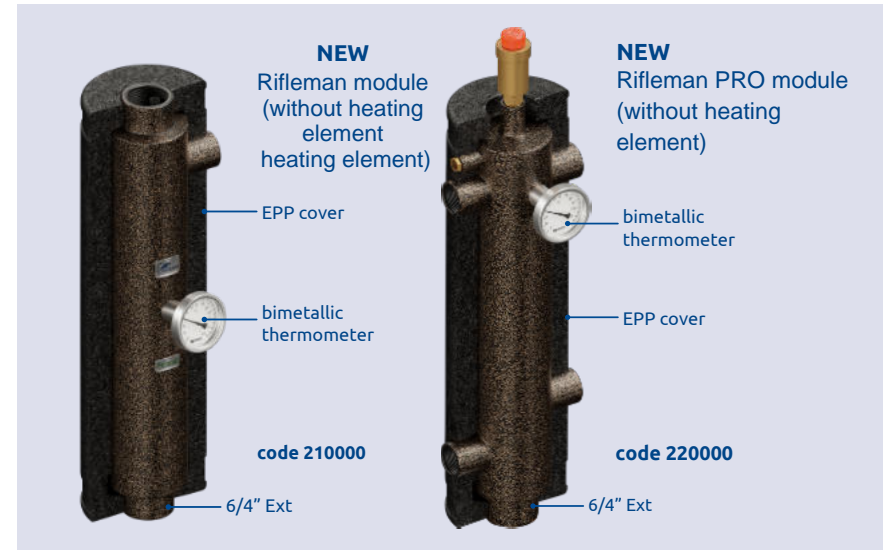
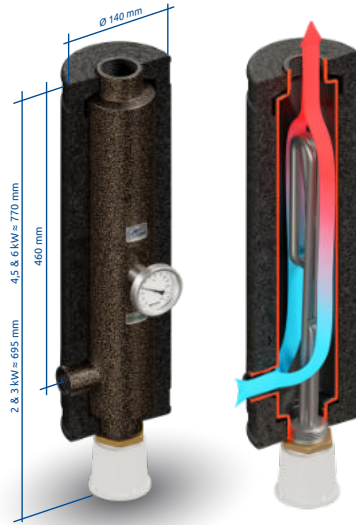
CH inline heater Rifleman



Data sheet



Rifleman / 400V	
4,5 kW / 400 V	Rifleman 400/4
code	214004
6 kW / 400 V	Rifleman 400/6
code	214006
Rifleman / 230V	
2 kW / 230 V	Rifleman 230/2
code	212302
3 kW / 230 V	Rifleman 230/3
code	212303



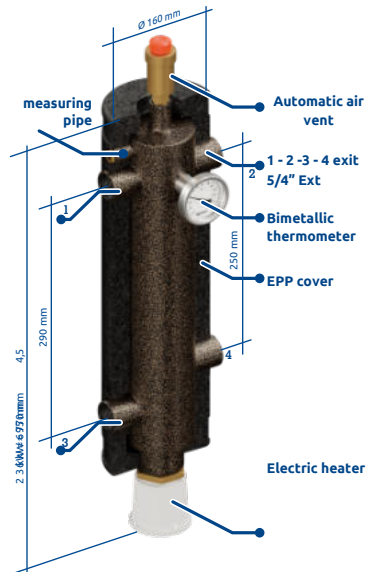
CH inline heater Rifleman PRO with low loss header function



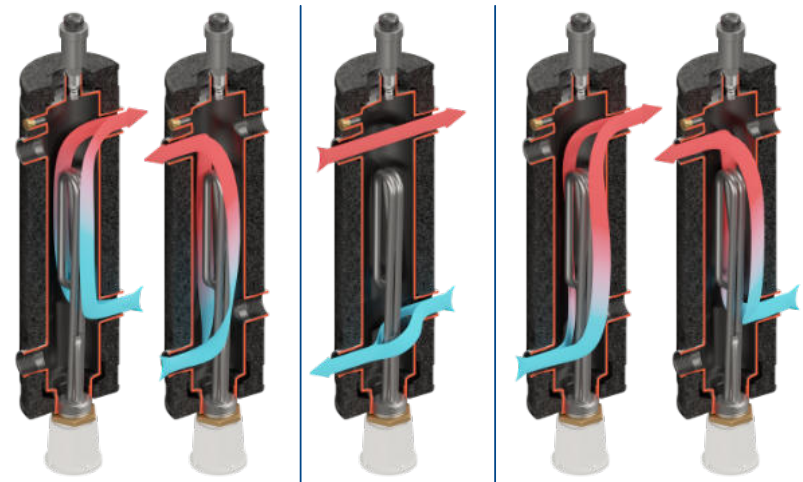
Data sheet



Rifleman PRO / 400V	
4,5 kW / 400 V	Rifleman PRO 400/4
code	224004
6 kW / 400 V	Rifleman PRO 400/6
code	224006
Rifleman PRO / 230V	
2 kW / 230 V	Rifleman PRO 230/2
Code	222302
3 kW / 230 V	Strzelec PRO 230/3
Code	222303

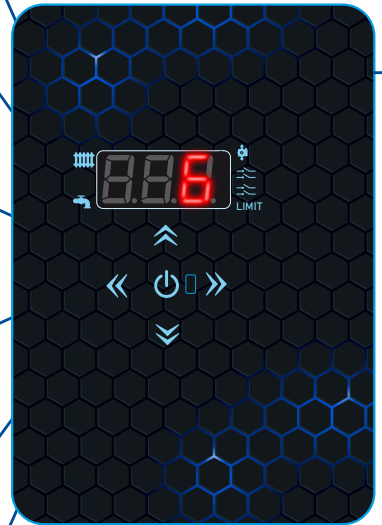


Universal connection - 5 variants





Get as much as you can from PV



Electronic control panel

Microprocessor control system

Boatswain, Uhlán work counter

- consumption setting energy
- stop signal Boatswain, Uhlán operation

End of limit

Disconnects the gas boiler when the Bosman, Ulan is switched on. Turns on the gas boiler when the preset energy consumption limit runs out.

External voltage-free thermostat (0V)

Programming the work of Boatswain, Uhlán

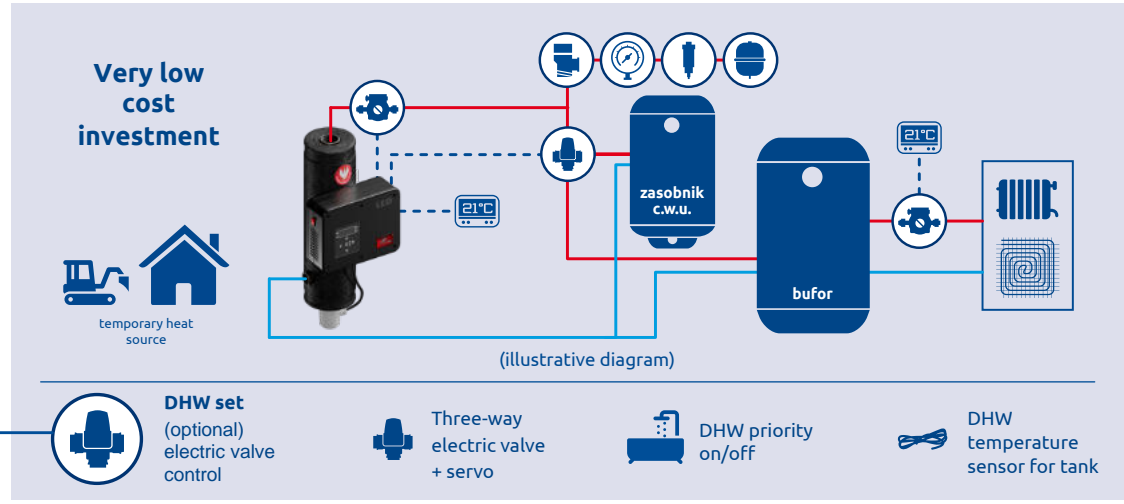
CH pump control

Possibility to control an external central heating pump independently of the heat source

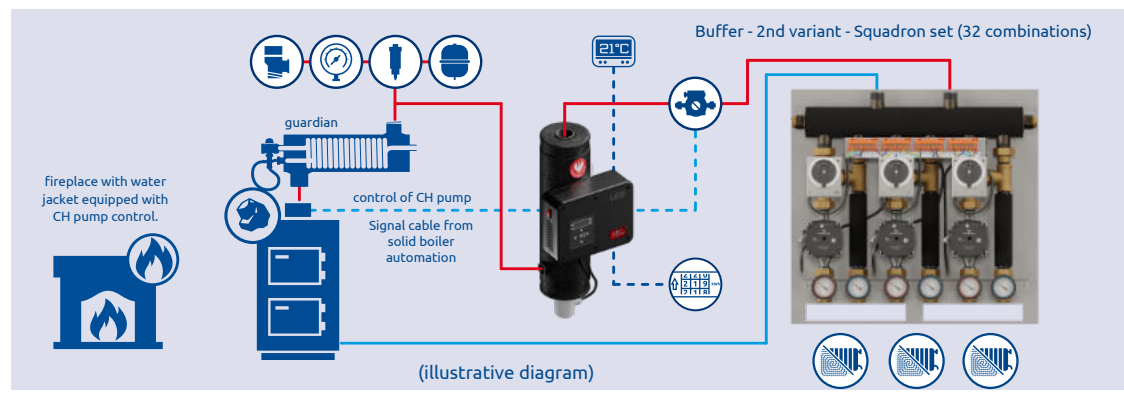
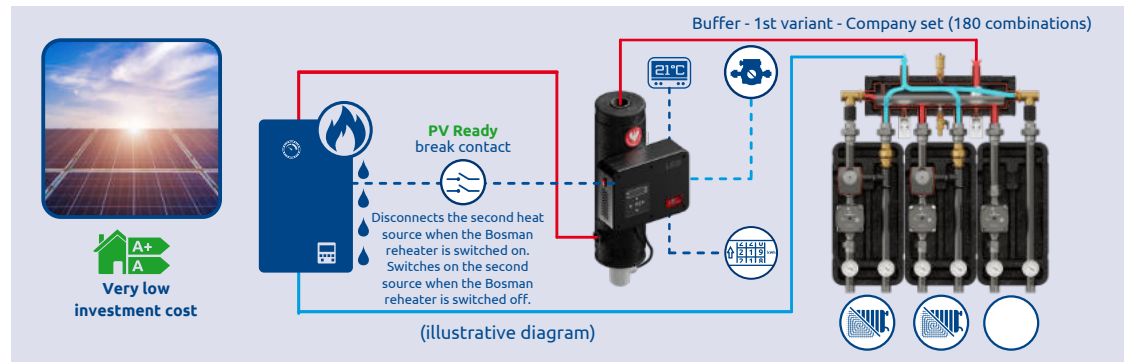


energy efficiency class D

Advanced CH in - line heaters: Uhlán LED, Boatswain LED PRO, Boatswain LED Temporary alternative heating device

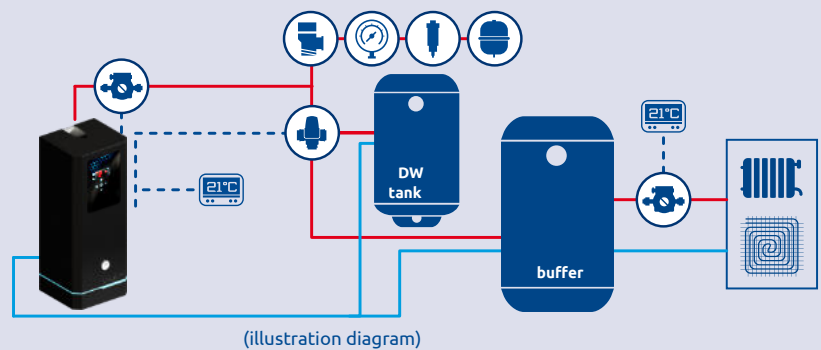






Ideal for use with a gas or solid-fuel boiler



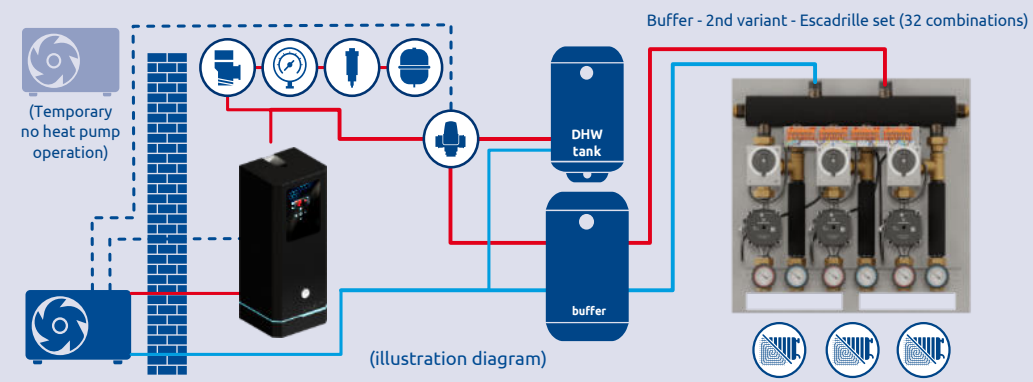
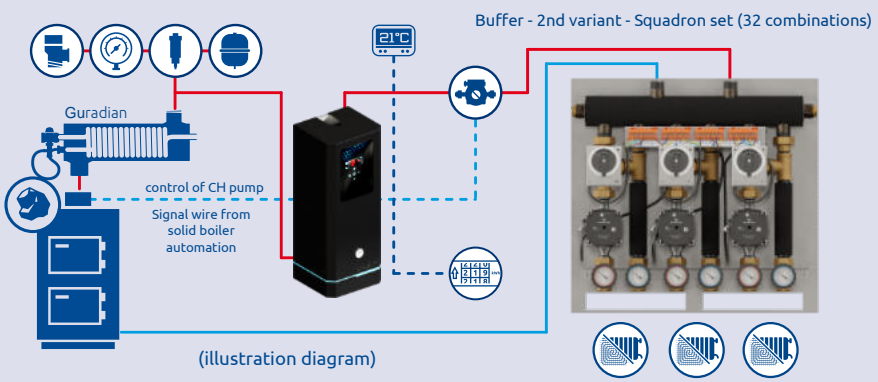
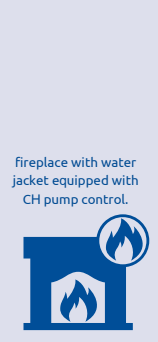
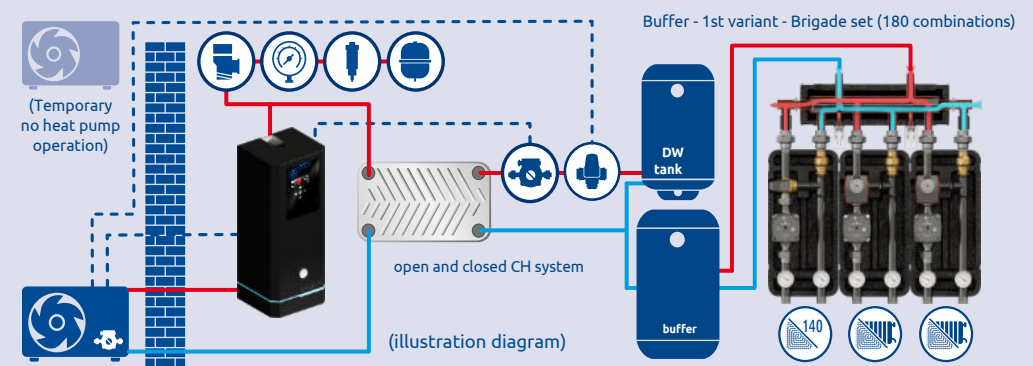
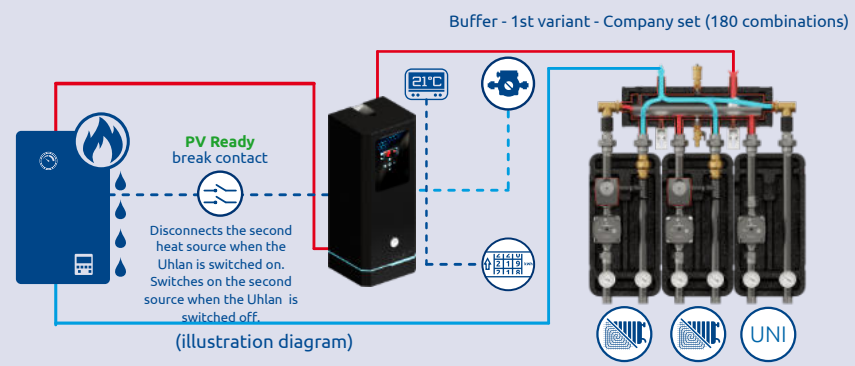


Very low cost of investment



-  DHW set (optional) electric valve control
-  Three-way electric valve + servo
-  Domestic hot water priority on/off
-  DHW temperature sensor for tank

Ideal for use with a gas or solid-fuel boiler

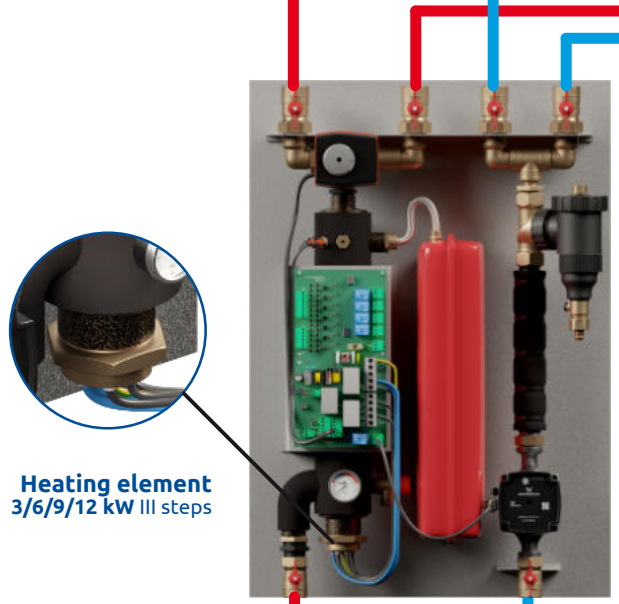
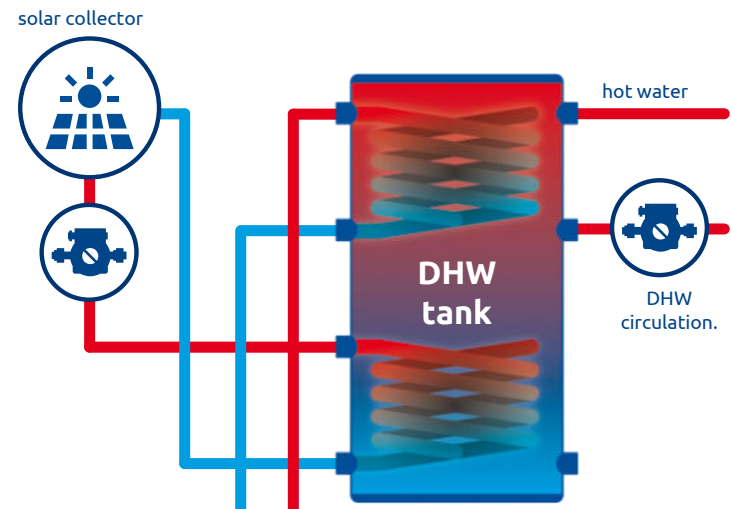


Block IV
Stand alone heater device III variants

I Variant - temporary absence of heat pump
II Variant - temporary operation - awaiting heat pump installation
III Variant - house under construction - concerned about external heat source

Ideal for use with gas boilers, solid fuel boilers and fireplaces with water jackets

temporary heat source

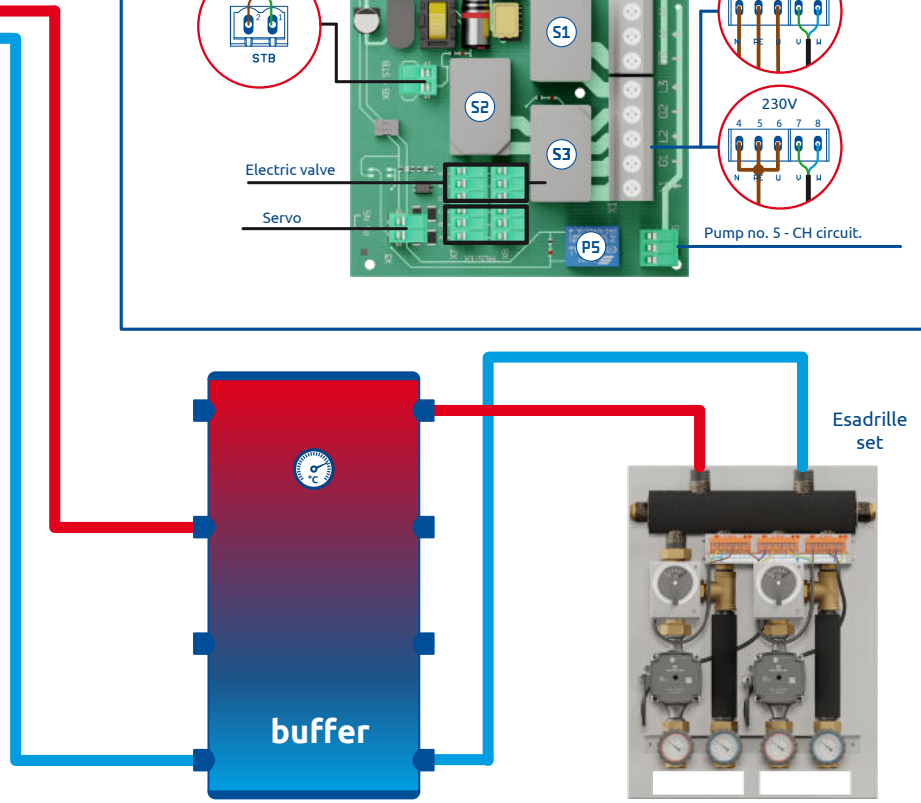
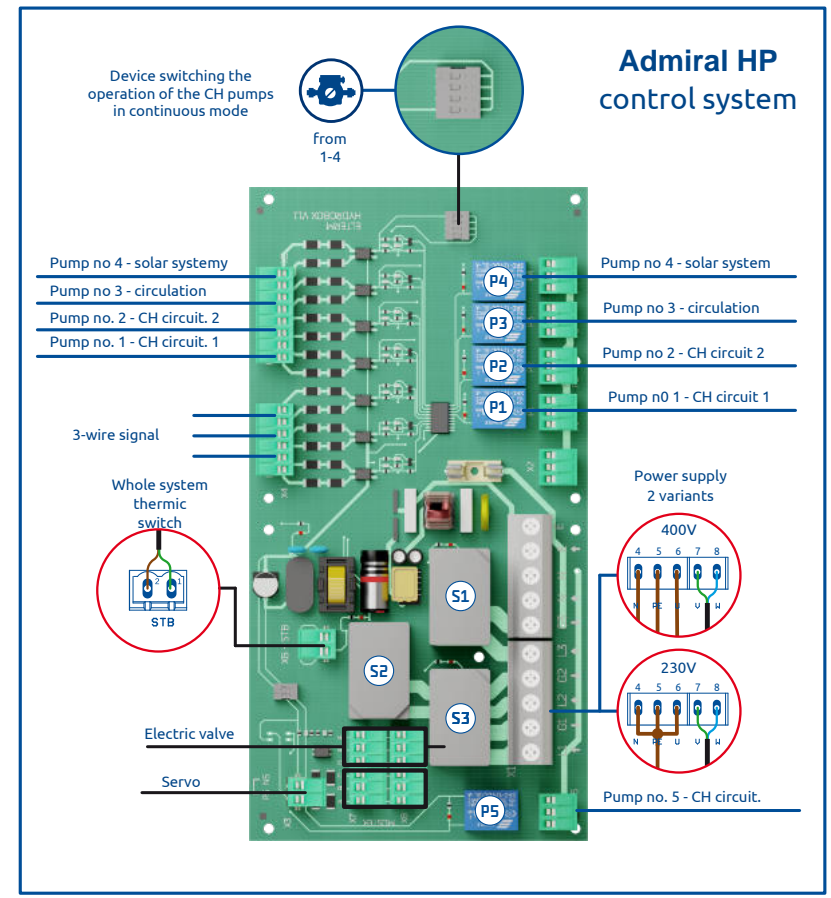
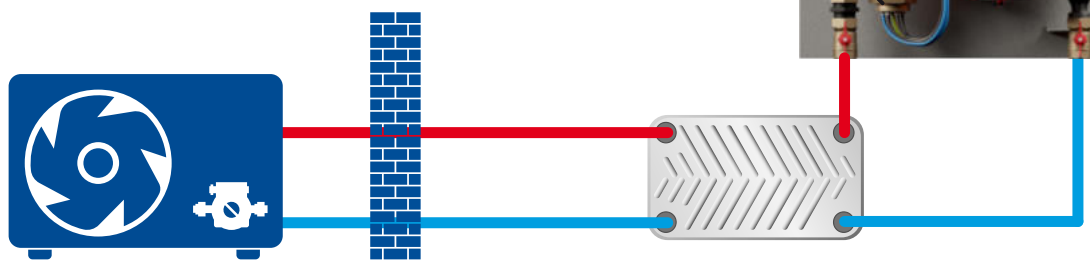


Heating element
3/6/9/12 kW III steps



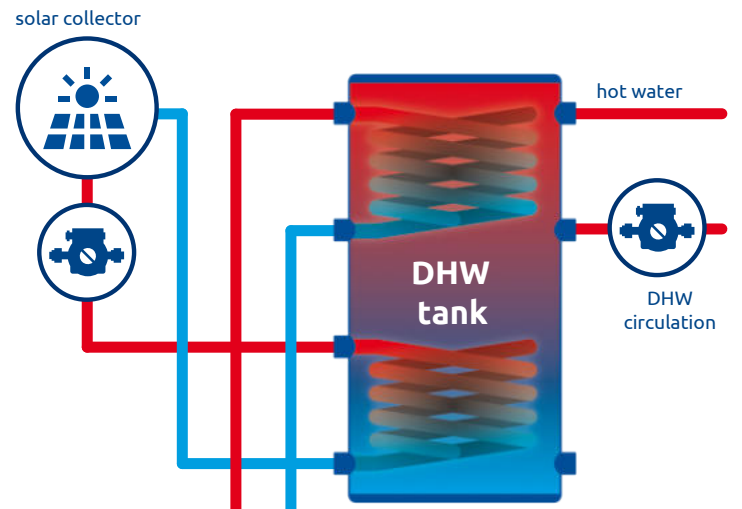
- Dedicated to monobloc heat pumps
- Ideal as a peak heat source
- OPTION independent heating device

- I variant** - temporary absence of heat pump
- II variant** - temporary operation - pending awaiting installation of heat pump
- III variant** - house under construction - you are concerned about the external heat source





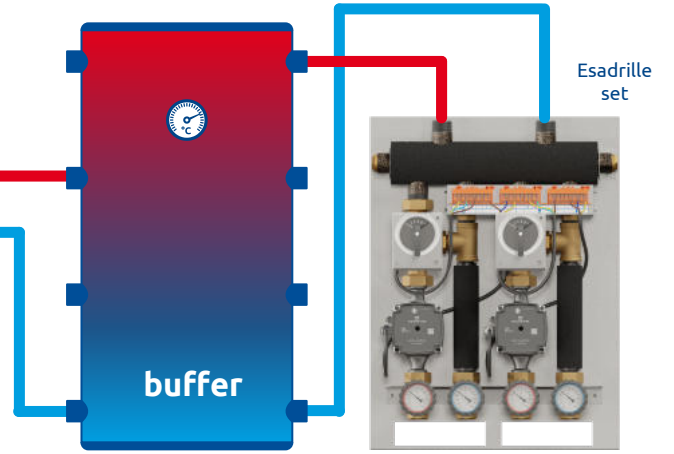
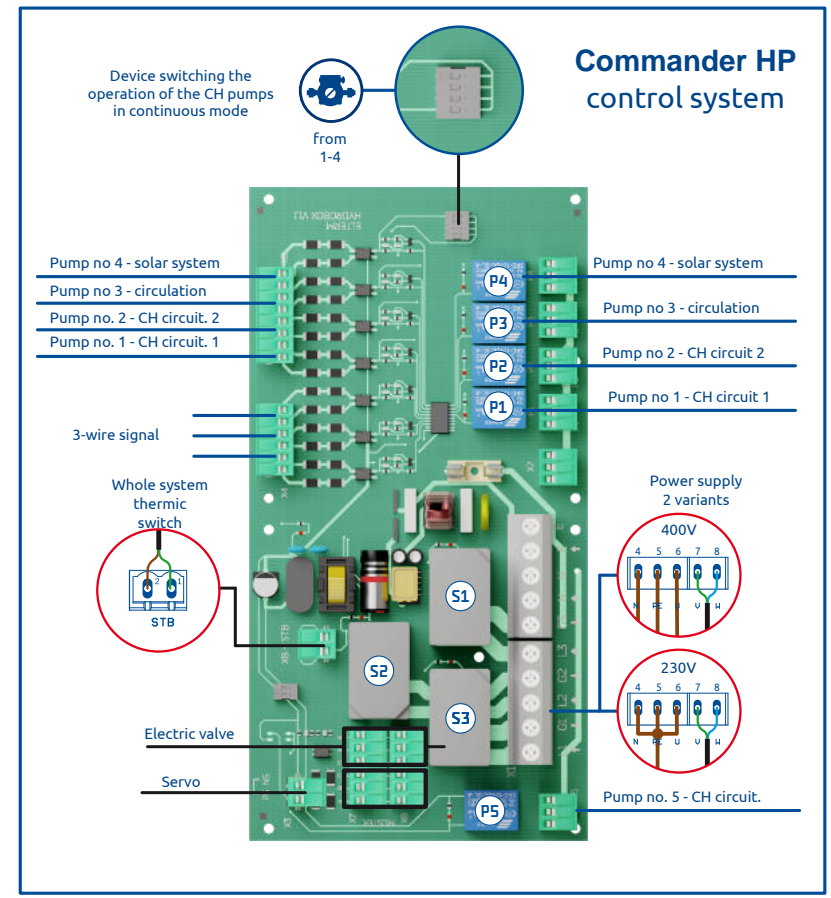
- Dedicated to monobloc heat pumps
- Ideal as a peak heat source
- OPTION independent heating device**
- I variant**
- temporary absence of heat pump
- II variant**
- temporary operation - pending awaiting installation of heat pump
- III variant**
- house under construction
- you are concerned about the external heat source



Heating element 3/ 6/9/12 kW III steps



3/4" Ext for external expansion vessel connection



We heat like the cavalry



YEARS **ELTERM**[®]



Thematic catalogues



CH heating
electric boilers



to work with
the buffer



for use with
boilers



Culm Stores Distribution
Elterm, Abbey Road,
Park Royal, NW10 7SU
London

phone +44 7576 869160
e-mail: office@culmstoreselterm.co.uk
web site: <https://culmstoreselterm.co.uk/>



Facebook