



We heat like the cavalry



YEARS **ELTERM**[®]

Hydraulic modules
and
electric in-line heater
in central heating system.



New - Spring 2024



PC Ready



Green energy clean air programme



Admiral HP



Commander HP



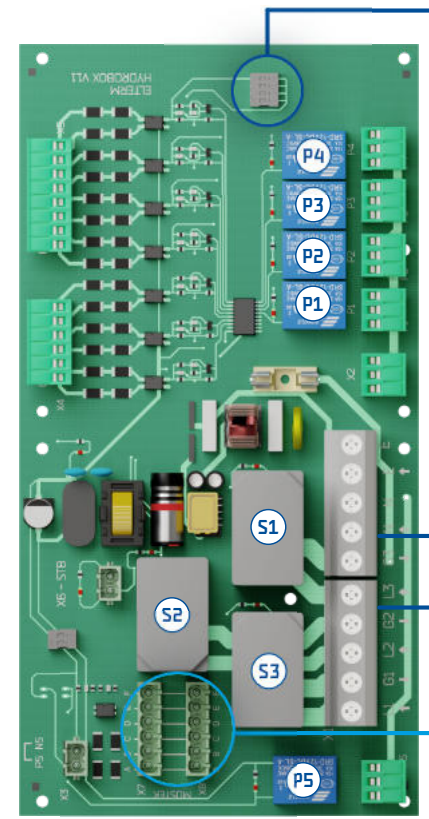
Uhlan HP



Boatswain HP

New spring 2024

The most advanced control system in Poland



Blok I
Control of central heating pumps - Max. 4 circuits

low-current relays

Switch for changing the running of the central heating pumps in continuous mode.

Block II
Control of in - line heater- III steps

high current contactors

Main power supply 230/400 V

Power supply (4 5 6 7 8) N PE U U W

Wyłącznik termiczny całego układu (STB)

Block III
Connecting terminal

1. the three-way valve for CH/DHW
2. the rotary valve servo

Block IV
Self-heating unit III variants

Temperature sensor

external 230V thermostat

pump

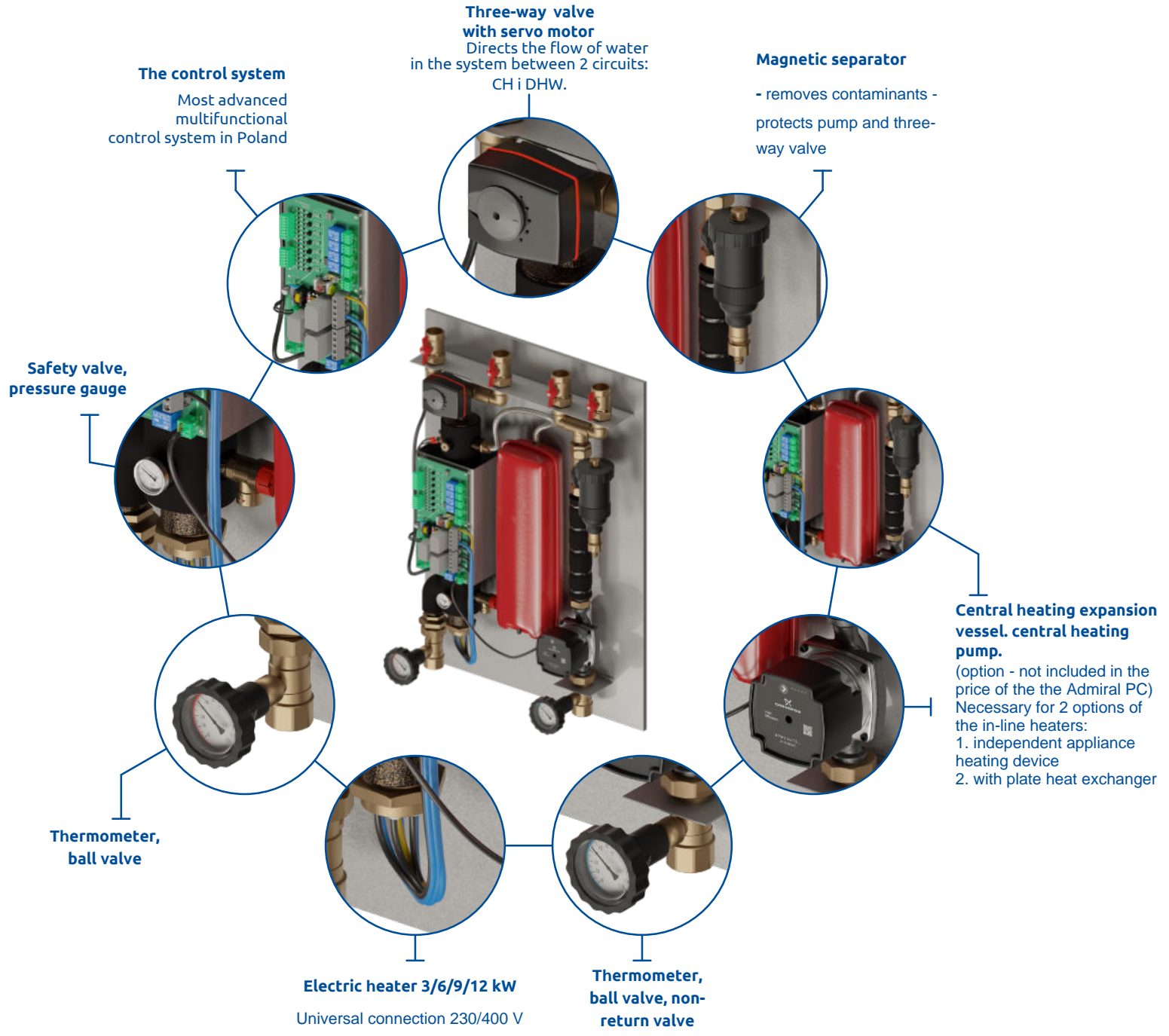
I variant - temporary absence of heat pump
II variant - temporary running - awaiting heat pump installation
III variant - house under construction - worried about external heat source

- Dedicated to monobloc heat pumps
- Ideal as a peak heat source



OPTION
independent heating device

- I variant** - temporary absence of heat pump
- II variant** - temporary running - awaiting heat pump installation
- III variant** - house under construction - worried about external heat source



Hydraulic module Commander HP

C.h. in - line heater Uhlan HP

CH in - line heater Boatswain



Multifunctional control system



Safety valve, pressure gauge



Electric heating element 3/6/9/12 kW
III stepped



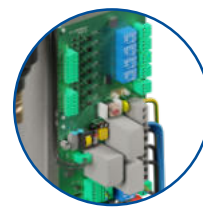
Magnetic separator



CH pump (optional)



3/4" Ext
for the connection of an external expansion vessel



Multifunctional control system



Safety valve, pressure gauge



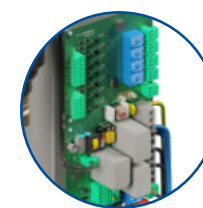
Electric heating element 3/6/9/12 kW
III stepped



2 x 6/4" Ext



Muff 3/4" Ext
for the connection of an external expansion vessel



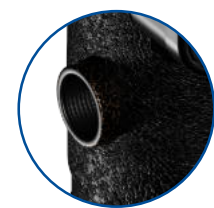
Multifunctional control system



Electric heating element 3/6/9/12 kW
III stepped

Boatswain HP PRO

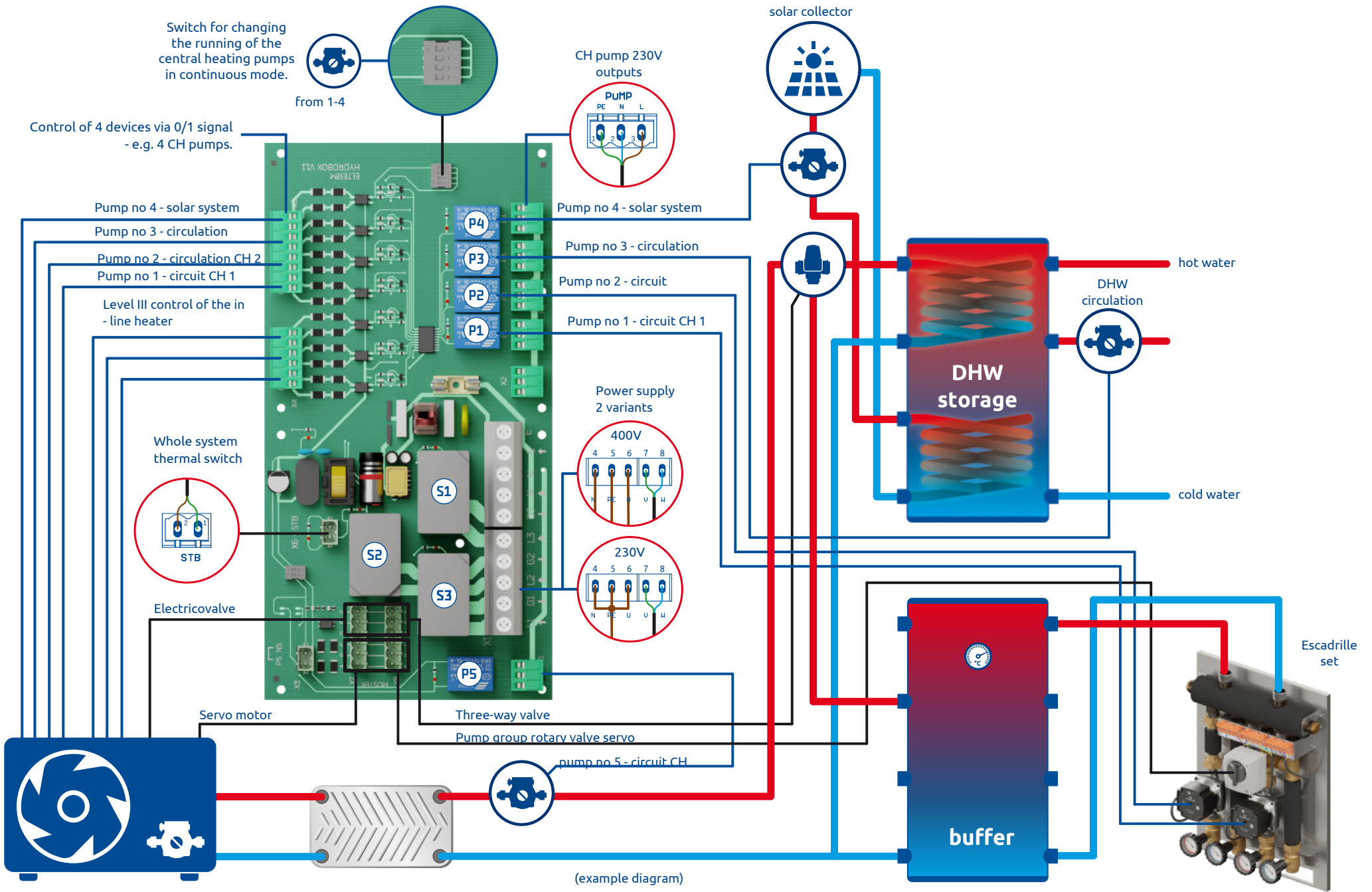
Boatswain HP



4 x 6/4" Ext



2 x 6/4" Ext





ELTERM M.M. Kaszuba Sp. J.
POLSKA 86-200 Chełmno
Przemysłowa 5
www.elterm.pl
e-mail: biuro@elterm.pl

Commercial apartment:
phone: +48667 005 000



Service department
phone +48722 118 115
serwis@elterm.pl



electric boilers in-
line heaters CH



for use with
electric boilers



for use with
buffer

CH in - line heaters - comparison



| | Maximum in-line heater power | Connections | Built-in high-current contactors | Built-in low-current relays | Built-in thermal switch for the entire system - STB | III-stage heater control (230V) | Possibility of connecting an external 230 V thermostat (independent operation) | In-line heater operation counter | Possibility of connecting an external 0 V thermostat (independent operation) | Built-in central heating water thermostat (5-70°C) | Metal housing | Magnetic separator | Built-in pressure gauge and safety valve | Three-way valve + servo motor | Thermometer + ball valve thermometer + ball valve + non-return valve | Expansion vessel (connection 3/4" - in-line heater tank) | Central heating pump (180mm wide) | Universal connection - 4 connections / hydraulic low loss header function |
|-------------------|------------------------------|-------------|----------------------------------|-----------------------------|---|---------------------------------|---|----------------------------------|---|--|---------------|--------------------|--|-------------------------------|--|--|-----------------------------------|---|
| Admiral PC | 12 | 1" | ● | ● | ● | ● | ● | ○ | ○ | ○ | ● | ● | ● | ● | ● | h/i | h/i | ○ |
| Commander PC | 12 | 1" | ● | ● | ● | ● | ● | ○ | ○ | ○ | ● | ● | ● | h/e | ○ | h/e | h/i | ○ |
| Uhlan PC | 12 | 1½" | ● | ● | ● | ● | ● | ○ | ○ | ○ | ● | ○ | ● | h/e | ○ | h/e | ○ | ○ |
| Boatswain PC PRO | 12 | 1¼" | ● | ● | ● | ● | ● | ○ | ○ | ○ | ○ | ○ | ○ | ○ | ○ | ○ | ○ | ● |
| Boatswain PC | 12 | 1½" | ● | ● | ● | ● | ● | ○ | ○ | ○ | ○ | ○ | ○ | ○ | ○ | ○ | ○ | ○ |
| Uhlan LED | 12 | 1½" | ● | ● | ● | ● | ● | ● | ● | ● | ● | ○ | ○ | h/e | ○ | ○ | ○ | ○ |
| Boatswain LED PRO | 12 | 1¼" | ● | ● | ● | ● | ● | ● | ● | ● | ○ | ○ | ○ | h/e | ○ | ○ | ○ | ● |
| Boatswain LED | 12 | 1½" | ● | ● | ● | ● | ● | ● | ● | ● | ○ | ○ | ○ | h/e | ○ | ○ | ○ | ○ |
| Rifleman PRO | 6 | 1¼" | ○ | ○ | ○ | ○ | ○ | ○ | ○ | ● | ○ | ○ | ○ | ○ | ○ | ○ | ○ | ● |
| Rofleman | 6 | 1½" | ○ | ○ | ○ | ○ | ○ | ○ | ○ | ● | ○ | ○ | ○ | ○ | ○ | ○ | ○ | ○ |

| max power | Admiral PC | Commander PC | Uhlan PC | Botaswain PC PRO | Boatswain PC | Uhlan LED | Boatswain LED PRO | Boatswain LED | Rifleman PRO | Rifleman |
|-----------|------------|--------------|----------|------------------|--------------|-----------|-------------------|---------------|--------------|----------|
| 3 kW | 373003 | 351003 | 330003 | 320003 | 310003 | 264003 | 254003 | 234003 | 222303 | 212303 |
| 6 kW | 373006 | 351006 | 330006 | 320006 | 310006 | 264006 | 254006 | 234006 | 224306 | 214006 |
| 8 kW | — | — | — | 320008 | 310008 | — | 254008 | 234008 | — | — |
| 9 kW | 373009 | 351009 | 330009 | — | — | 264009 | — | — | — | — |
| 12 kW | 373012 | 351012 | 330012 | 320012 | 310012 | 264012 | 254012 | 234012 | — | — |

● h / i - possible installation inside the housing ● h / e - possible installation inside the housing